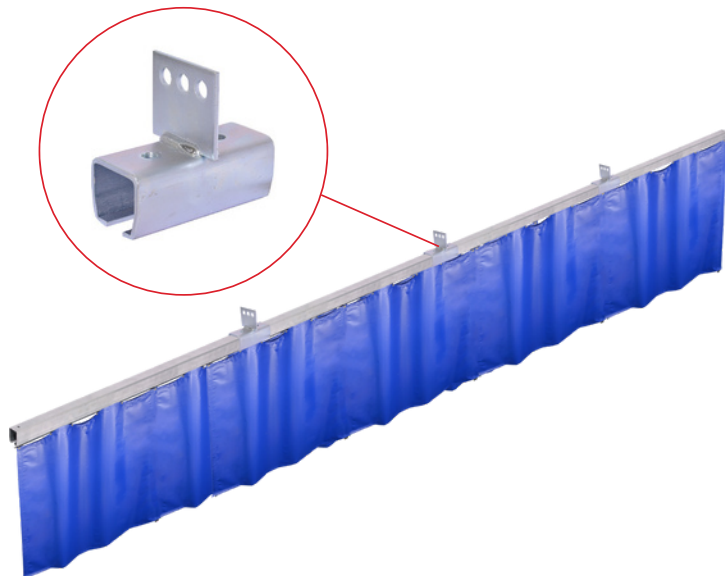




The **Chain or Beam Mount System** can be mounted perpendicular directly to a wooden beam or suspended from existing trusses or beams with chain or cable, carabiners or S-Hooks depending on the weight per 5 linear feet.



FEATURES

- ☆ Allows you to suspend parallel or perpendicular from your existing structure
- ☆ Offers a easier solution and the possibility to get a longer drop than the threaded rod suspension system.
- ☆ The only option to mount perpendicular to a beam that is not clampable.
- ☆ Heavy duty 16 Gauge Galvanized Steel
- ☆ Fasteners to mount to a wooden beam are not included.
- ☆ You may experience a sway with the Chain / Beam Mount System. Bracing is recommended, please talk to our sales team for solutions.

Suspended Mount

Perpendicular



Parallel



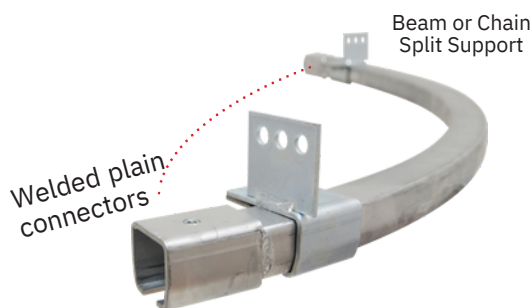
Direct Mount

Perpendicular to a wooden beam



Straight Track

Available Lengths: 2', 4', 5', 6', 7' and 8'



Curved Track 90° or 45°

- Welded plain connectors on each end
- Requires two Beam or Chain Split Supports on each end of the curve

Where To Use: Connector, Split Support, Plain Connectors, and Endstops



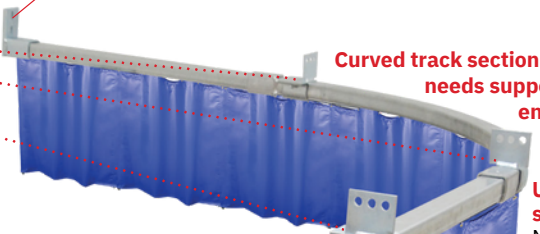
Beam or Chain Split Support

- Provides support to the track
- Does not connect track
- Can be placed anywhere along the track but not over a connector



Wall Mount End Stop

- Flange Up or Down available
- Includes 1 set screw



Curved track section needs support on each end of curve.

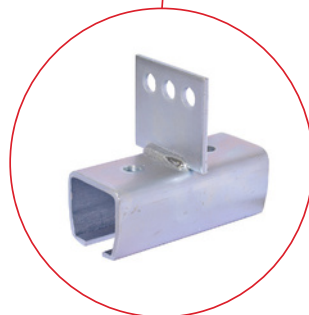
Use split supports. No additional connectors are needed because each curve comes with welded on connectors and two set screws.

Supports are needed every 5ft of track.



Plain Connector

- Connects straight track
- No support
- Includes 2 set screws



Beam or Chain Connector

- Connects straight track sections
- Also provides support to the track
- Includes 2 set screws



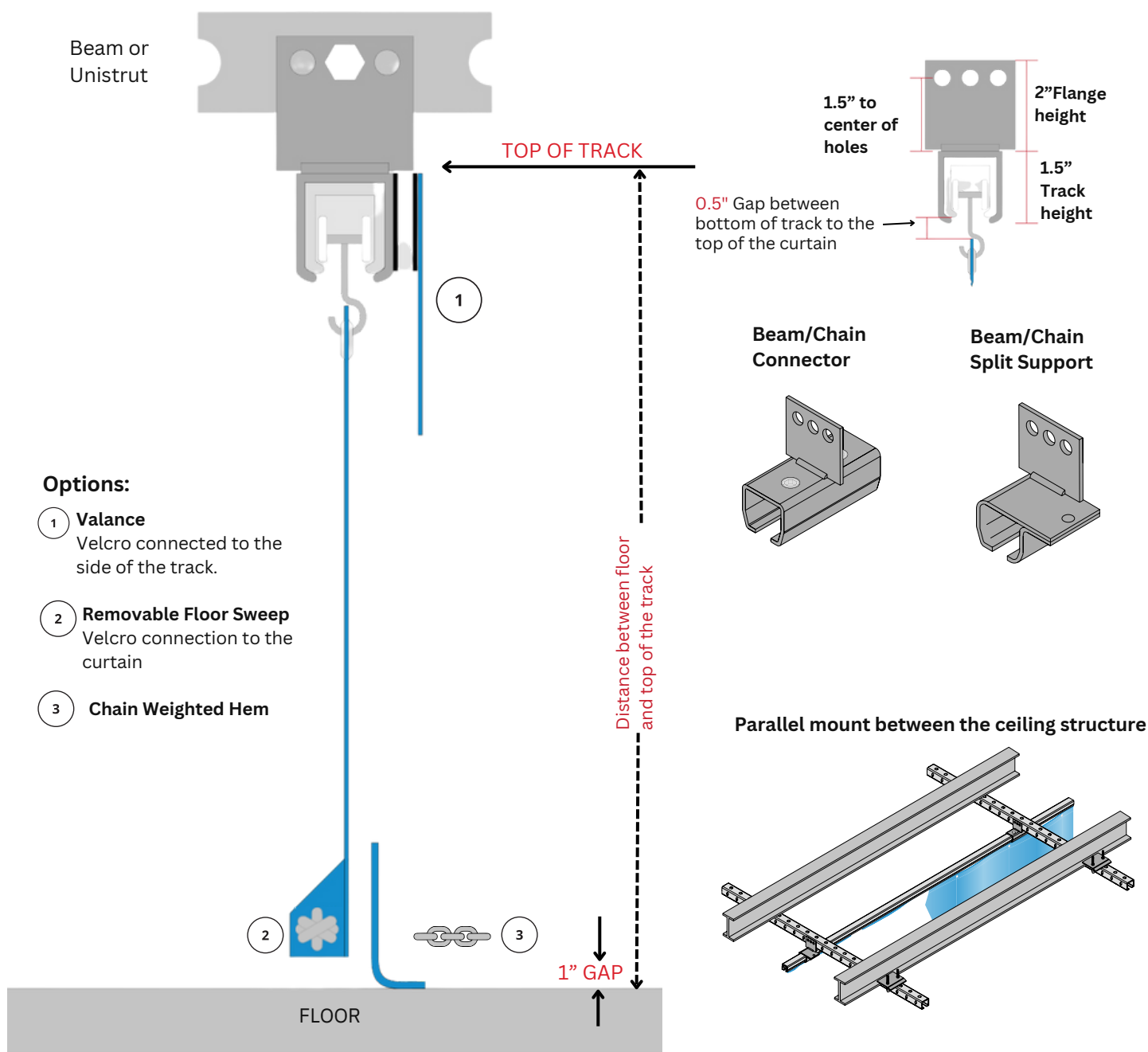
Adjustable End Stop

AmCraft
MANUFACTURING, INC.

The image below provides an overall side elevation view.

Make sure the track is mounted at the correct height for the bottom edge of the curtain to hang 1" above the floor. If you ordered a floor sweep, about 2" of the sweep should sit on the floor.

You will find in our quotations where to put the top surface of the track, to insure the Curtain will hang at the correct height.



Hardware Components



Beam or Chain Connector

incl. 2 set screws



Beam or Chain Split Support



Beam or Chain Corner Connector

incl. 2 set screws



Beam or Chain T Connector

incl. 3 set screws



Curved Track 90°

incl. 2 set screws



Curved Track 45°

incl. 2 set screws



Straight Track



Extra Set Screw



Plain Connector

incl. 2 set screws



Wall Mount Flange Up

incl. 1 set screws



Wall Mount Flange Down

incl. 1 set screws



Adjustable End Stop



Steel Rollers



Nylon Rollers



Pull Rope Trolley
Steel Wheels 4' or 10'



10" Overlap Trolley
Options with 4' or 10' Rope

AmCraft
MANUFACTURING, INC.

Phone: 847-439-4565

Email: sales@amcraftonline.com

Website: www.amcraftindustrialcurtainwall.com