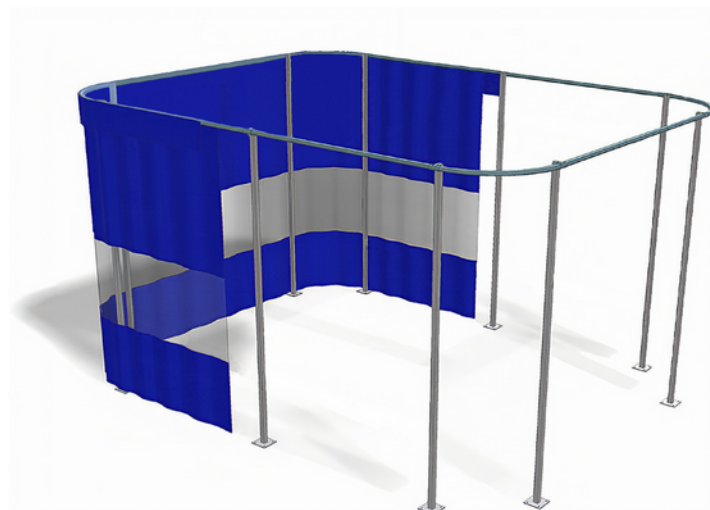


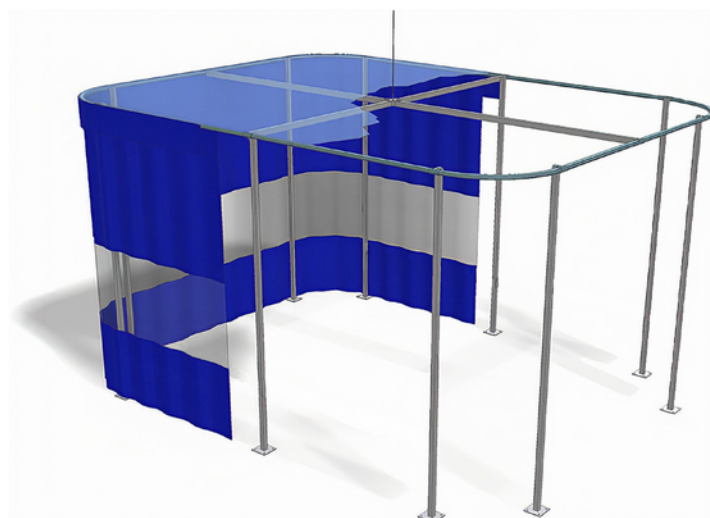


Freestanding



Freestanding with Cover

Grid ceiling must be supported from above



The **Freestanding Curtain Track System** is anchored to the floor.

This track system is mostly used if the track can not be supported from the existing ceiling structure.

We recommend an upright support every 5ft.

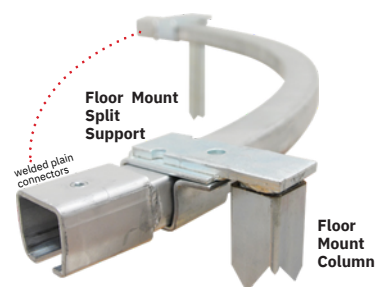
FEATURES

- ☆ Anchored to the floor
- ☆ Can be reconfigured and reused
- ☆ Self supported - does not need support from above
- ☆ Ceiling cover with a ceiling grid can be created if support from above is possible
- ☆ Height limit depending on the curtain weight (12ft max height)



Straight Track

Available Lengths: 2', 4', 5', 6', 7' and 8'



Curved Track 90° or 45°

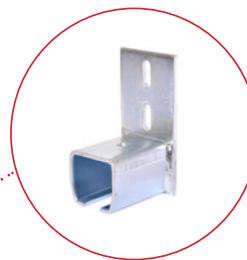
- Welded plain connectors on each end
- Requires two **Floor Mount Split Supports** & **Floor Mount Columns** on each end of curve

Where To Use: Connectors, Split Supports, Plain Connectors, and End Stops



Floor Mount Split Support

- Inserted in Column
- Provides support to the track
- Does not connect track
- Can be placed anywhere along the track but not over a connector



Wall Mount End Stop

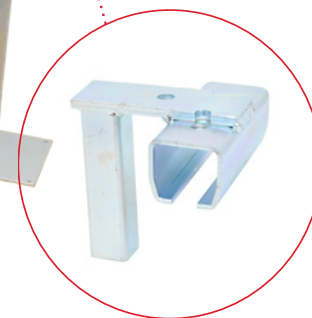
- Flange Up or Down available
- Includes 1 set screw

Curved track section needs support on each end of curve.

Supports are needed every 5ft of track.

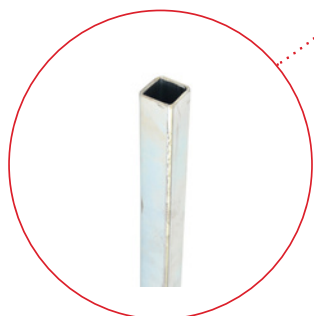


Adjustable End Stop



Floor Mount Connector

- Inserted in Column
- Connects straight track sections
- Also provides support to the track
- Includes 2 set screws



Floor Mount Column

- Connects to Base Plate
- Connector or Split Support inserted on top



Floor Mount Base Plate

- Base that connects to Column
- Anchor screws not included

AmCraft
MANUFACTURING, INC.

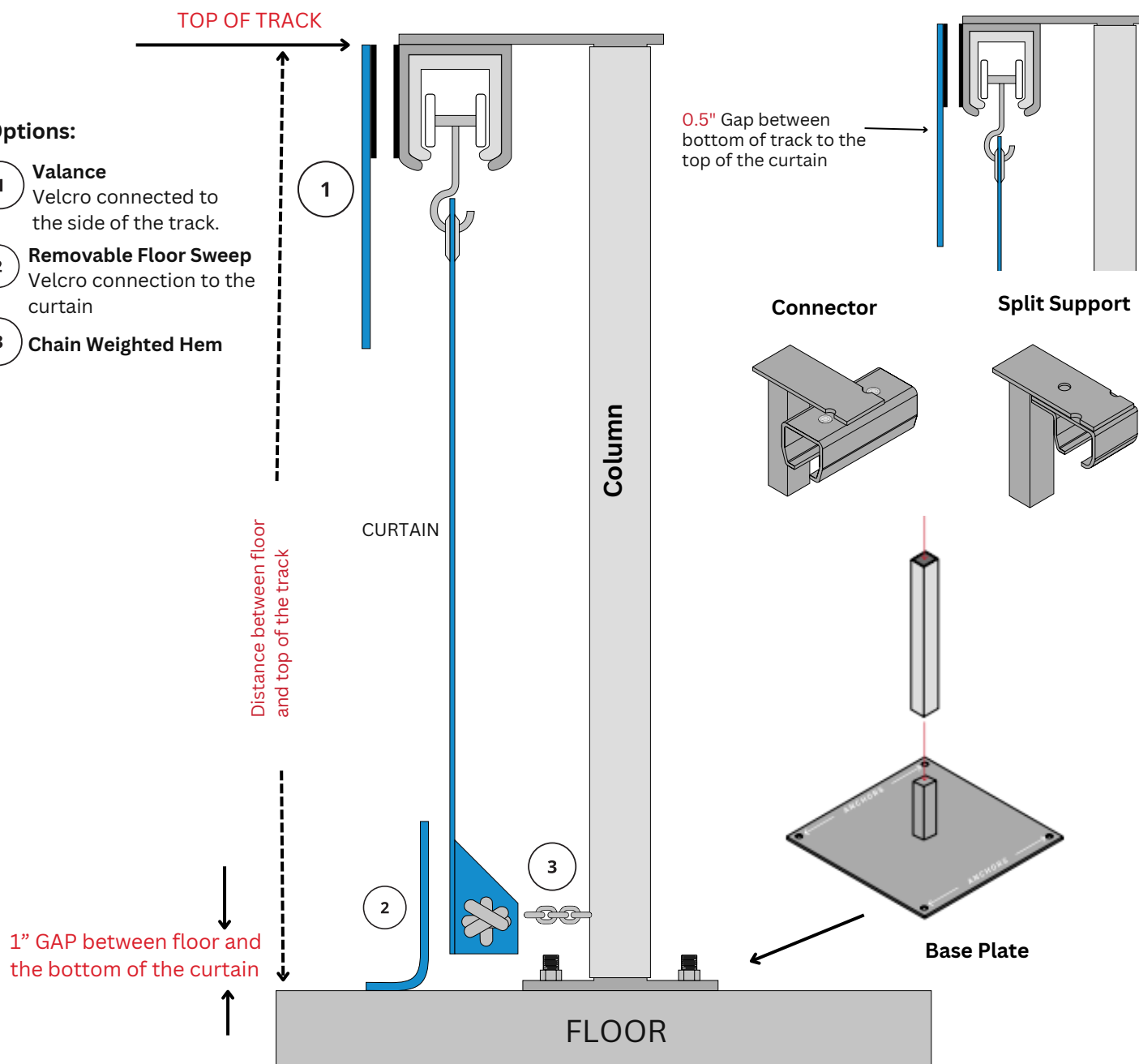
The image below provides an overall side elevation view.

Make sure the track is mounted at the correct height for the bottom edge of the curtain to hang 1" above the floor. If you ordered a floor sweep, about 2" of the sweep should sit on the floor.

You will find in our quotations where to put the top surface of the track, to insure the Curtain will hang at the correct height.

Options:

- 1 **Valance**
Velcro connected to the side of the track.
- 2 **Removable Floor Sweep**
Velcro connection to the curtain
- 3 **Chain Weighted Hem**



Hardware Components



Floor Mount Connector

incl. 2 sets screws



Floor Mount Split Support



Floor Mount Corner Connector

incl. 2 sets screws



Floor Mount T Connector

incl. 3 sets screws



Straight Track



Floor Mount Column



Floor Mount Base Plate



Curved Track 90°

incl. 2 sets screws



Curved Track 45°

incl. 2 sets screws



Extra Set Screw



Plain Connector

incl. 2 sets screws



Wall Mount Flange Up

incl. 1 sets screws



Wall Mount Flange Down

incl. 1 sets screws



Adjustable End Stop



10'' Overlap Trolley
Options with 4' or 10' Rope



Steel Rollers



Nylon Rollers



Pull Rope Trolley
Steel Wheels 4' or 10'



Phone: 847-439-4565

Email: sales@amcraftonline.com

Website: www.amcraftindustrialcurtainwall.com